



Extended Warranty Report

And Test Run Data Collection Instructions

J-SERIES
Variable Refrigerant Flow Systems



J-IIS

J-II

Scan here to download a digital copy
(Adobe Acrobat Reader required for completion)



Please complete entries on all pages. Refer to the outdoor and indoor unit "Installation Manual" as needed.

Please email completed Registration Report to <http://contractors.fujitsugeneral.com/registration>

System Owner			
Address			Phone
Email (Optional)			
Installing contractor			
Address			Phone
Fujitsu Distributor or Rep			
Report Completed By			Phone
Email			Date
Outdoor unit total			
Indoor unit total			

OUTDOOR UNIT SETUP					
	YES	NO		YES	NO
Unit elevated 2" above ground or anticipated snow level?			DIP sw. SET1, SET2, SET3 & SET4 factory default setting?		
Unit is level, +/- 3"?			DIP switch SET5-4 ON? Note: (1) ON per network segment		
All minimum unit clearances met?			X1 & X2 resistance check: Between 45 and 60 Ω?		
Liquid and vapor service valves open completely?			Total Refrigerant Charge written on inside cover?		
Is proper drainage provided at the unit bottom?			Power ON at least (12) hours before start up?		

REFRIGERANT PIPING					
	YES	NO		YES	NO
All refrigerant piping properly supported?			Was a nitrogen purge provided during brazing?		
All refrigerant lines insulated, without any gaps?			Did a pressure test of 600 PSIG hold for (24) hours?		
Any refrigerant piping traps installed?			All flare and braze connections tested for leaks?		
Liquid line drier installed with bypass? (Heating start only)			Did vacuum level hold 500 microns or less for 60 minutes?		
Vapor line (suction) drier installed with bypass?			Separation Tube and Headers in their correct orientation?		

START UP			FUNCTION CODE F2:00 (J-II AOU**RLAVM SYSTEMS ONLY)		
	YES	NO	Pipe **length between OD unit to nearest ID unit	ft.	
"Indoor Unit Connection Check" performed? (F3:12)				YES	NO
Any system errors at OU 7 segment display?			**Length IS between 131 and 213 ft.	F2:00:00	
Condensate line(s) draining properly?			**Length less than 131 ft.	F2:00:01	
"Test Run" performed using "Service Tool"?			**Length is between 213 and 295 ft.	F2:00:02	
Test Run file (.gz file extension) downloaded and saved?			**Length greater than 295 ft.	F2:00:03	

Please complete this page for each refrigerant system.

System #		
Outdoor Unit Model Number	Serial Number	REF AD

Indoor Unit Model Number	Serial Number	REF AD	IU AD

REFRIGERANT CHARGE CALCULATION								
Liquid pipe length	Refrigerant per foot	Total	Factory Charge Per Unit		Total System Charge			
	A	B	A X B	AOU36/48RLAVS	8.82 lb.	(Total Additional Refrigerant + Factory Charge)	lbs.	
1 / 4"		.014 lb./ft.	lb.	AOU36RLAVM	10.6 lb.	Total System Charge less than limit?	YES	NO
3 / 8"		.039 lb./ft.	lb.	AOU48/60RLAVM	11.7 lb.	AOU**RLAVS (J-IIS) 15.0 lbs. MAXIMUM		
Total Additional Refrigerant			lb.			AOU**RLAVM (J-II) 34.61 lbs. MAXIMUM		

ACTUAL PIPE LENGTH			HEIGHT DIFFERENCE (STRAIGHT LINE MEASUREMENT)		
	YES	NO		YES	NO
OU to first Separation Tube (or Header) ≥ 9 ft.?			J-II OD unit to ID unit ≤164 ft. (OD unit ABOVE ID units)		
OU to nearest indoor unit ≥ 16 ft.?			J-II OD unit to ID unit ≤131 ft. (OD unit BELOW ID units)		
OU to farthest IU (≤393 ft. J-II ?) (≤164 ft. J-IIS ?)			J-IIS OD unit to ID unit ≤98 ft. (OD unit ABOVE ID units)		
First Separation Tube to farthest indoor unit ≤131 ft.?			J-IIS OD unit to ID unit ≤98 ft. (OD unit BELOW ID units)		
Total liquid pipe length (≤590 ft. J-II?) (≤262 ft. J-IIS)			Maximum distance between indoor units ≤49 ft.?		

For Technical assistance, please contact:

- ✓ Your Fujitsu distributor
- ✓ Fujitsu Service Hotline (888) 888-3424 or (973) 575-0380
- ✓ Fujitsu Technical Support email service@fujitsugeneral.com

Please complete this page for each refrigerant system.

System #		
Outdoor Unit Model Number	Serial Number	REF AD

Indoor Unit Model Number	Serial Number	REF AD	IU AD

REFRIGERANT CHARGE CALCULATION								
Liquid pipe length	Refrigerant per foot	Total	Factory Charge Per Unit		Total System Charge			
	A	B	A X B	AOU36/48RLAVS	8.82 lb.	(Total Additional Refrigerant + Factory Charge)	lbs.	
1 / 4"		.014 lb./ft.	lb.	AOU36RLAVM	10.6 lb.	Total System Charge less than limit?	YES	NO
3 / 8"		.039 lb./ft.	lb.	AOU48/60RLAVM	11.7 lb.	AOU**RLAVS (J-IIS) 15.0 lbs. MAXIMUM		
Total Additional Refrigerant			lb.			AOU**RLAVM (J-II) 34.61 lbs. MAXIMUM		

ACTUAL PIPE LENGTH			HEIGHT DIFFERENCE (STRAIGHT LINE MEASUREMENT)		
	YES	NO		YES	NO
OU to first Separation Tube (or Header) ≥ 9 ft.?			J-II OD unit to ID unit ≤164 ft. (OD unit ABOVE ID units)		
OU to nearest indoor unit ≥ 16 ft.?			J-II OD unit to ID unit ≤131 ft. (OD unit BELOW ID units)		
OU to farthest IU (≤393 ft. J-II ?) (≤164 ft. J-IIS ?)			J-IIS OD unit to ID unit ≤98 ft. (OD unit ABOVE ID units)		
First Separation Tube to farthest indoor unit ≤131 ft.?			J-IIS OD unit to ID unit ≤98 ft. (OD unit BELOW ID units)		
Total liquid pipe length (≤590 ft. J-II?) (≤262 ft. J-IIS)			Maximum distance between indoor units ≤49 ft.?		

For Technical assistance, please contact:

- ✓ Your Fujitsu distributor
- ✓ Fujitsu Service Hotline (888) 888-3424 or (973) 575-0380
- ✓ Fujitsu Technical Support email service@fujitsugeneral.com

Please complete this page for each refrigerant system.

System #		
Outdoor Unit Model Number	Serial Number	REF AD

Indoor Unit Model Number	Serial Number	REF AD	IU AD

REFRIGERANT CHARGE CALCULATION								
Liquid pipe length	Refrigerant per foot	Total	Factory Charge Per Unit		Total System Charge			
	A	B	A X B	AOU36/48RLAVS	8.82 lb.	(Total Additional Refrigerant + Factory Charge)	lbs.	
1 / 4"		.014 lb./ft.	lb.	AOU36RLAVM	10.6 lb.	Total System Charge less than limit?	YES	NO
3 / 8"		.039 lb./ft.	lb.	AOU48/60RLAVM	11.7 lb.	AOU**RLAVS (J-IIS) 15.0 lbs. MAXIMUM		
Total Additional Refrigerant			lb.			AOU**RLAVM (J-II) 34.61 lbs. MAXIMUM		

ACTUAL PIPE LENGTH			HEIGHT DIFFERENCE (STRAIGHT LINE MEASUREMENT)		
	YES	NO		YES	NO
OU to first Separation Tube (or Header) ≥ 9 ft.?			J-II OD unit to ID unit ≤164 ft. (OD unit ABOVE ID units)		
OU to nearest indoor unit ≥ 16 ft.?			J-II OD unit to ID unit ≤131 ft. (OD unit BELOW ID units)		
OU to farthest IU (≤393 ft. J-II ?) (≤164 ft. J-IIS ?)			J-IIS OD unit to ID unit ≤98 ft. (OD unit ABOVE ID units)		
First Separation Tube to farthest indoor unit ≤131 ft.?			J-IIS OD unit to ID unit ≤98 ft. (OD unit BELOW ID units)		
Total liquid pipe length (≤590 ft. J-II?) (≤262 ft. J-IIS)			Maximum distance between indoor units ≤49 ft.?		

For Technical assistance, please contact:

- ✓ Your Fujitsu distributor
- ✓ Fujitsu Service Hotline (888) 888-3424 or (973) 575-0380
- ✓ Fujitsu Technical Support email service@fujitsugeneral.com

Please complete this page for each refrigerant system.

System #		
Outdoor Unit Model Number	Serial Number	REF AD

Indoor Unit Model Number	Serial Number	REF AD	IU AD

REFRIGERANT CHARGE CALCULATION								
Liquid pipe length	Refrigerant per foot	Total	Factory Charge Per Unit		Total System Charge			
	A	B	A X B	AOU36/48RLAVS	8.82 lb.	(Total Additional Refrigerant + Factory Charge)	lbs.	
1 / 4"		.014 lb./ft.	lb.	AOU36RLAVM	10.6 lb.	Total System Charge less than limit?	YES	NO
3 / 8"		.039 lb./ft.	lb.	AOU48/60RLAVM	11.7 lb.	AOU**RLAVS (J-IIS) 15.0 lbs. MAXIMUM		
Total Additional Refrigerant			lb.			AOU**RLAVM (J-II) 34.61 lbs. MAXIMUM		

ACTUAL PIPE LENGTH			HEIGHT DIFFERENCE (STRAIGHT LINE MEASUREMENT)		
	YES	NO		YES	NO
OU to first Separation Tube (or Header) ≥ 9 ft.?			J-II OD unit to ID unit ≤164 ft. (OD unit ABOVE ID units)		
OU to nearest indoor unit ≥ 16 ft.?			J-II OD unit to ID unit ≤131 ft. (OD unit BELOW ID units)		
OU to farthest IU (≤393 ft. J-II ?) (≤164 ft. J-IIS ?)			J-IIS OD unit to ID unit ≤98 ft. (OD unit ABOVE ID units)		
First Separation Tube to farthest indoor unit ≤131 ft.?			J-IIS OD unit to ID unit ≤98 ft. (OD unit BELOW ID units)		
Total liquid pipe length (≤590 ft. J-II?) (≤262 ft. J-IIS)			Maximum distance between indoor units ≤49 ft.?		

For Technical assistance, please contact:

- ✓ Your Fujitsu distributor
- ✓ Fujitsu Service Hotline (888) 888-3424 or (973) 575-0380
- ✓ Fujitsu Technical Support email service@fujitsugeneral.com

Fujitsu J-Series Test Run Data Collection for (10) Year Extended Parts Warranty

Congratulations on your Fujitsu J-Series VRF system installation! Each J-II and J-IIS system includes a standard warranty of (5) years on factory Parts and (7) years on the Compressor. To protect your customers investment, Fujitsu offers a (10) Year Extended Warranty on Parts and Compressor, upon approval of the "Registration Report" and Test Run data. In order to qualify for the Extended Warranty, please complete the following steps for Test Run data collection:

Step 1- Test Run Data Collection Step 2- Return Documentation

Please contact your local Fujitsu Distributor or Rep for assistance if you are:

- Unsure how to use "Service Tool".
- Installing a J-Series system with any Airstage 3 phase V-II / VR-II systems

Step 1 – Test Run Data Collection

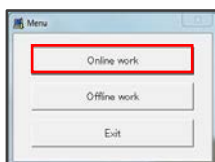
Once the system has been started and verified error free, collect (1) hour of "Test Run" data using the Fujitsu Service Tool software, in either Heat or Cool mode of operation. In order to ensure compatibility with J-Series equipment, the Service Tool software must be:

- Version 1.13 or higher.

The following is a summary of Service Tool (V 2.0) to collect Test Run data for review by the Fujitsu Commissioning Agent.

If you do not have, or are not familiar with the Service Tool software, please contact your Fujitsu Distributor or Rep for assistance.

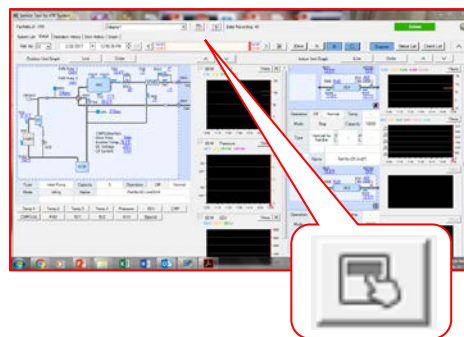
- Select "Online work"



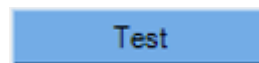
- Use "Address Checker" to verify indoor and outdoor unit communication



- Detail tab- Click the "Operation Setting" icon

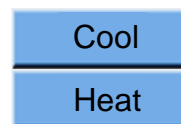


- Select "Test" in either Heat or Cool mode, based upon outdoor temperature and at your discretion.

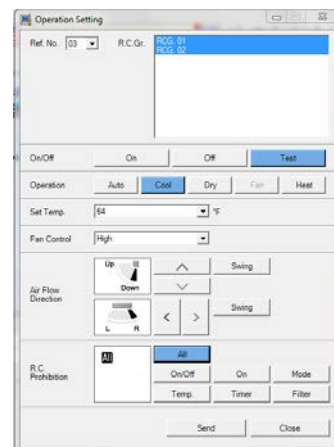


General guidelines are:

- ❖ ODT > 70° F. =
- ❖ ODT < 70° F. =



- ✓ Set Temp to
 - ❖ 64° in Cool
 - ❖ 88° in Heat
- ✓ Fan Control to High
- ✓ RC Prohibition to All



- Click "Send" to initiate the Test Run operation



- Test Run operation will run for (60) minutes, then cancel automatically. All indoor unit icons will be displayed in yellow while in the Test Run mode.

Operation	Test	Normal	Temp.	64
Mode	Cool		Capacity	18000
Type	Vertical Air Handler	V L	H L	-
Name Ref.No.03 Unit01				

- Detail tab- After approximately (30) to (40) minutes of run time, use the "Check List" feature to confirm operating variables are within range.

Check List

- ❖ "Point Data" or "Avg. Data" may be used to confirm operation is satisfactory
- ❖ Out of range points are highlighted in "pink".

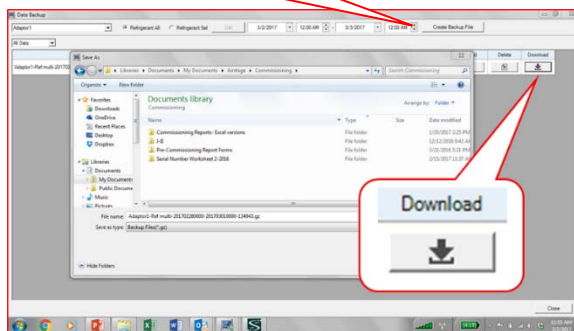
Station Unit	Station Name	Unit	Test Results
101	101-101-101	101	101
102	102-102-102	102	102
103	103-103-103	103	103
104	104-104-104	104	104
105	105-105-105	105	105

System Unit	System Name	Unit	Test Results
101	101-101-101	101	101
102	102-102-102	102	102
103	103-103-103	103	103
104	104-104-104	104	104
105	105-105-105	105	105

- Saving Test Run Data- Once the (60) minute Run Test is complete:

- ❖ "Create Backup File" (Automatically named with a .gz file extension)
- ❖ Download the Test Run (.gz) file to your folder or location of choice, such as "My Documents", "Desktop" etc.

Create Backup File



Step 2- Return Documentation

Once the Test Run data file has been acquired, please review and verify the Test Run data is accurate and complete, recorded with the system error free.

Please upload the (3) files below electronically to:

<http://contractors.fujitsugeneral.com/registration/>

1. Test Run data file (.gz or .bak)
2. Completed "Extended Warranty Report"
3. Customer invoice / proof of purchase

In order for the Fujitsu (10) Year Extended Part Warranty to be considered, the documentation must be received within (120) days of the J-Series system start up.

Questions?

If you have any questions regarding the Extended Warranty Report, or collection of the Test Run data, please contact your regional Fujitsu Distributor TSA, Technical Service Advisor.

In addition, Fujitsu General America provides technical assistance:

Toll Free Service Hotline
(888) 888-3424 or (973) 575-0380

Mon – Friday, 8:00 am to 8:00 pm EST

Tech Support Email
service@fujitsugeneral.com